



- Thank you for purchasing INNOVV K2 motorcycle camera system, Have fun and enjoy!
- Please take time to review this user manual and quick start guide.

A Camera Overview & Content

1 x DVR; 1 x Front Camera (3 meter long video cable); 1 x Rear Camera (1.5 meter long video cable); 1 x GPS Module; 2 x Mount Set; 1 x microSD Card Reader and accessories.

- | | |
|-------------------------------|--------------------------|
| 0. DVR | 11. Micro SD Card Slot |
| 1. Wi-Fi Indicator | 12. Rest |
| 2. Recording Indicator | 13. Thumb Screw |
| 3. Photograph Indicator | 14. Video Cable |
| 4. GPS Indicator | 15. Camera A (Front) |
| 5. Power Button | 16. Camera B (Rear) |
| 6. Camera A Connector (Front) | 17. Waterproof Connector |
| 7. Camera B Connector (Rear) | 18. GPS Module |
| 8. GPS Cable Connector | 19. 12v to 5v Converter |
| 9. Power Cable Connector | 20. Lens Glass |
| 10. Mini USB Port | |



B Initial Setup & Getting Started

Please familiarize yourself with K2 system before full installation to your motorcycle.

1. Connect the two cameras to the USB ports on DVR and fix them by the supplied thumb screws. The two cameras can be inserted either way around.
2. Connect GPS and DC converter to the connectors.
3. Insert a Class 10 or higher microSD/HC/XC card (max 256GB) into Micro SD card slot.
4. Download INNOVV K2 App from Google Play Store or App Store. (Compatible with iOS 8.3 and Android 5.1 and above). Or Scan QR codes (The required permissions must be granted in order for INNOVV App to run properly)
5. Power up the DVR via Mini Usb port (Output is >=1A, Like Mobile phone charger). Testing camera system only.
6. Select INNOVV_k2_*** From WiFi networks on your mobile device. The default password is 12345678. WiFi LED will be solid when successfully connected.
7. Access the K2 App, and allow the permission requests.
8. Via settings select reformat the SD Card and proceed.

You should now be 100% up and running. We suggest spending time getting to know the basics.

- A - Stop and start recording
- B - Access Recording via your mobile device
- C - Enter settings and check out the layout and factory settings
- D - View Live record as this is a great tool for Lens location



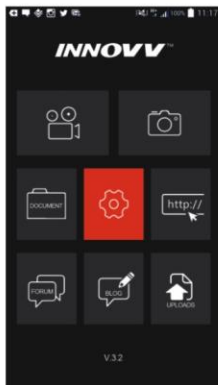
For Android Device



For Apple Device



INNOVV K2 App Logo



C App icons

Live Recording

Click the (📹) to enter recording menu. (🔴) is flashing means live recording mode, will be solid when recording stopped. (⏸) is used to manually stop and start record. (📍) Gps and (P) Parking Mode indicators will appear when they are turned on. Click (📺) to view the video on a full screen. You will have a split screen, main screen is front camera and smaller is rear.

⏪ Go back to main menu page

Photography Mode

(📷) Select Photography Mode to take snap shots.

Document and Video Preview

Click the (📁) you will given 2 options (📷) Files in camera which is videos and photos saved on the sd card and (📱) which are files that you have saved to your mobile device.

Select (📷) to review files on your sd card in camera system. Your recording will be displayed, the file name indicates the date and time. At the end of each file name you will have either R.MP4 and F.MP4 this indicates the front and rear recording.

Once you select one of the video files you have the option to download which will transfer the file to your (📱) folder or you can play, delete or cancel.

(📱) to review files saved to your device. Select the required file and you have option to Play, Share (social media, email etc), Delete or Cancel. You can use the (⏪) at any time to return to navigate back. Tap (⚙️) to review and change all K2 camera settings.

D LED Indicators



📶	Wi-Fi	Flashing	Wi-Fi is not connected
		Solid	Wi-Fi is connected
📹	Recording	Flashing	Camera is actively recording
		Solid	Recording is on stand-by
📷	Photograph	3 Flashes	Taking a photo
		Rapid Flashing	Firmware update
GPS	GPS	Flashing	GPS is connecting
		Solid	GPS is connected



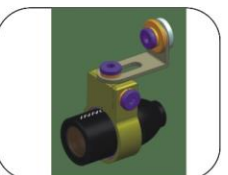
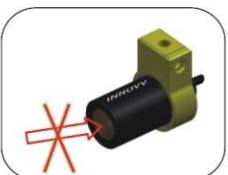
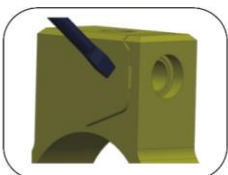
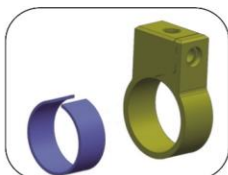
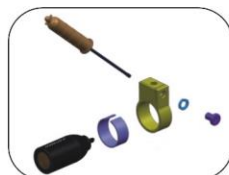


E Installation reference

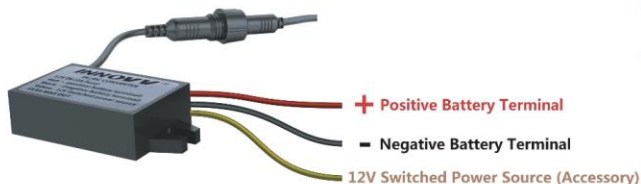


F Camera Installation

- Insert screw driver into the gap to split the mount and increase the diameter of the mount for easy camera fitting.
- Locate a position that allows for the desired or optimal view for recording. INNOVV on camera is up right, The 'Live' option in the K2 App is a great tool to help you adjust and obtain the perfect field of view, You can use either length lens cables (1.5/3.0mtr) as front/back, whichever suits your bike set up.
- Secure the lenses well. Vibration will affect video quality. When deciding on lens location ensure that the lens/holder can be secured down well to limit vibration as best as possible, vibration & resonance that generate "Wave" on the video clips.
- Do not push the glass on lens, and attempt to disassemble the camera, or damage camera and break the waterproof seal, void warranty.



G Converter connection



- INNOVV K2 is designed to start/stop recording when the ignition is powered on/off.
 - **Red** wire is to be connected to the positive battery terminal.
 - **Black** wire is to be connected to the negative battery terminal or a grounding source.
 - **Yellow** wire is connected to an Acc power/switched power source, like head light, trail light, horn and others which is associated the ignition. This allows camera system to start/stop recording when turn on /off the ignition.
- Warning- Do not join Red wire and Yellow wire together and connect to the switched power resource as the last video clip will not save successfully.**
- The converter 5V output has 10 second when ignition is on/off.
Keep the converter at least 10cm away from the DVR to avoid interference.

H Video playback with GPS tracking

- **Play back on App**
Download the video clips from Files in Camera to Files in Device first.
The K2 app => Document => Files in Device => Download.
- **Play back on iOS device.** The K2 app => Document => Files in Device => Play. It will show the recording and GPS tracking.
- **Play back on Android device.** Disconnect INNOVV K2 WiFi first, then, The K2 app => Document => Files in Device => Play
- **Play back on PC**, Search and Download Dashcam Viewer to your PC and input the recordings to playback with GPS tracking.



I INSTALLING FIRMWARE

1. Insert your Sd card direct into your computer. Download /save the K2.bin file to the root level of your SD card. The link is www.innovv.com => support => INNOVV K2
2. Insert the Micro SD card into your INNOVV DVR.
3. Power on camera system.. The blue video recording light will be flashing erratically whilst the DVR is updated.. The update should take no longer than 45 seconds. Once update is successful the blue light will be flashing on a regular basis appx once a second.

J Further information & Customer support

- You can find more instruction from the K2 spec page, Click www.innovv.com => support => INNOVV K2 or <https://www.innovv.com/innovv-k2-spec>
- Have questions with the camera system or need support? please contact the local dealers/distributors, or send us the message, <https://www.innovv.com/contact>

